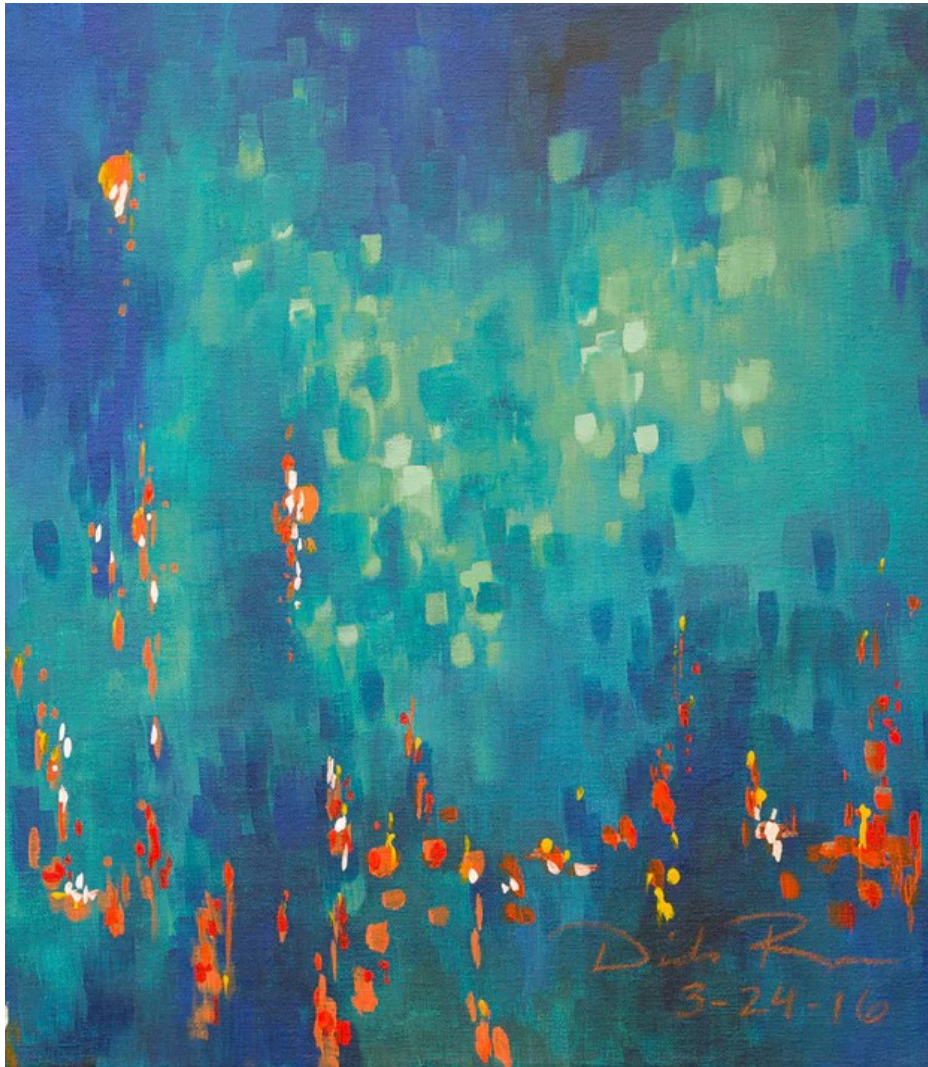




First Presbyterian
Church | Kerrville

October 20, 2024



Hoping Against Hope

October Sermon Series

GREETING AND ANNOUNCEMENTS

Welcome to First Presbyterian Church! Please fill out the black Friendship Pad located on the pew so that we might welcome you to our FPC community.

The Lord be with you. **And also with you.**

PRELUDE

Come, Thou Fount

Joseph Martin

†CALL TO WORSHIP

Based on Psalm 104

God's greatness is beyond our understanding, yet we proclaim:
Bless the Lord, O my soul!
God stretched the heavens across the sky; let us marvel at the stars that fill it.
Bless the Lord, O my soul!
God raised mountains above the depths; let us gather in wonder before them.
Bless the Lord, O my soul!
Called to worship, we bow humbly before our God!

†HYMN 475

Come, Thou Fount of Every Blessing

CALL TO CONFESSION AND RECONCILIATION

PRAYER OF CONFESSION

Holy God, your truth is frequently hard to hear. We confess our avoidance, our purposeful distractions, and the prideful arrogance that keeps us from hearing and responding to your Word.
Although you send us messages and messengers, we dismiss and disregard those who tell us we are wrong. Have mercy upon us, Holy God.
Open us to hearing the truth no matter how it is conveyed.
Forgive us, redeem us, and make us whole once again.
Silent Confession

ASSURANCE OF GOD'S GRACE

Friends in Christ, know this:
God's mercy is from everlasting to everlasting. Let us remind one another of this surpassing grace that transforms our lives.
In Jesus Christ, we are forgiven.
Alleluia! Amen.

†RESPONSE

Hymn 581

*Glory be to the Father, and to the Son,
and to the Holy Ghost; as it was in the beginning,
is now and ever shall be, world without end. Amen, amen.*

†PASSING OF THE PEACE

The peace of Christ be with you. And also with you.

CHILDREN'S TIME (11:00 AM)

ANTHEM (11:00 AM)

Leaning on the Everlasting Arms arr. by Mark Hayes
*What a fellowship, what a joy divine, leaning...
What a blessedness, what a peace is mine, leaning...
Leaning, leaning, safe and secure from all alarms,
Leaning on the everlasting arms.*

PRAYER FOR ILLUMINATION

FIRST LESSON Psalm 104:1-9, 24, 35 pg. 483 O.T.

SECOND LESSON Job 38:1-7, 34-41 pg. 420 O.T.

The Word of God for the people of God. Thanks be to God.

SERMON A Searching Faith Susan Shaw-Meadow

SILENT REFLECTION

†AFFIRMATION OF FAITH *From "The Confession of 1967:9.16-.17"*

God has created the world of space and time to be the sphere of God's dealings with humankind.

In its beauty and vastness, sublimity and awfulness, order and disorder, the world reflects the eye of faith, the majesty, and mystery of its Creator.

Life is a gift to be received with gratitude and a task to be pursued with courage.

People are free to seek life within the purpose of God: to develop and protect the resources of nature for the common welfare, to work for justice and peace in society, and in other ways, to use their creative powers for the fulfillment of human life. Amen.

†HYMN 22 God of the Sparrow

PRAYERS OF THE PEOPLE AND THE LORD'S PRAYER

Our Father who art in heaven, hallowed be thy name.

Thy kingdom come, thy will be done, on earth as it is in heaven.

Give us this day our daily bread; and forgive us our debts, as we forgive our debtors; and lead us not into temptation, but deliver us from evil. For thine is the kingdom and the power and the glory, forever. Amen.

INVITATION TO DISCIPLESHIP AND GENEROSITY

OFFERTORY All Things Bright and Beautiful Diane Bish

†RESPONSE Hymn 606

*Praise God, from whom all blessings flow;
praise God, all creatures here below;
praise God above, ye heavenly host;
praise Father, Son, and Holy Ghost. Amen.*

†PRAYER OF THANKSGIVING

†HYMN 23 God, You Spin the Whirling Planets

†CHARGE AND BENEDICTION

*You may remain seated and enjoy the postlude
or politely exit and visit with friends in the Narthex.*

POSTLUDE Variation on an American Hymn Tune Gordon Young



Thank You for Serving Today

WORSHIP LEADERS

8:30 & 11:00—Susan Shaw-Meadow, Jasiel Hernandez Garcia, Susan Montoya, Pam Cooper (8:30 am), Cheryl Sieker (11:00 am), Sabrina Adrian, Seth Lafler, Wes Lane

USHERS

8:30—Bill and Pam Cooper, Susan Junkin

11:00—Linda and Steve Phillips, Max Stecker, Mike Brunsvold, Mike and Nancy Wilson

MUSICIANS

Chancel Choir



Families in Worship

Children of all ages are welcome in worship. We have a special children's worship space on the balcony, and children's worship bags are available in the narthex. We encourage families to take advantage of these resources to include their children in worship. Nursery care is available for infants through kindergarten in Room 113 of the Education Building during Sunday school and the 11 am service. Many of our young children participate in worship until after the Conversation with Children. After the Conversation with the Children, a member of our childcare staff will meet the children in the narthex and escort them to the

Easy ways to give to the ministries of FPC

- Join the members who are using online giving to First Presbyterian. Sign up today at www.fpckerrville.org and click on the giving tab.
- You can also “text to give” right from your phone. Simply text to **45777** and type in **KERRFPC**. Follow the prompts. It is secure and convenient.

Contact Emily McAllister at the church office with any questions.

First Presbyterian Church

Staff and Worship Leaders

Pastors:

Rev. Jasiel Hernandez Garcia

Sr. Pastor/Head of Staff

Rev. Susan Montoya

Congregational Care Pastor

Susan Shaw-Meadow

Faith Formation Pastor

Support Staff:

Roy Jones, Facilities Manager

Wes Lane, Media Specialist

Madie Repka, Communications

Ministry Staff:

Emily McAllister, Dir. of Finances and Youth

Shannon Tuschak, Dir. Of Engagement

Worship & Music Staff:

Dr. Sabrina Adrian, Organist

Seth Lafler, Choir Director

Alysse O'Brien, Children's Music Director

Ministry Partners:

Caitlin Sandlin, CCP Director

Ann Reynolds, YES Center Director



First Presbyterian Church

800 Jefferson Street * Kerrville, Texas 78028

Phone (830) 257-3310 * Fax (830) 257-3393

lscott@fpckerrville.org * www.fpckerrville.org

Calendar Highlights at First Presbyterian

For a full listing of church events, log on to www.fpckerrville.org and click on "Calendar".

Sunday, October 20

- 8:30 Worship—Sanctuary
- 9:30 Fellowship Coffeetime—Ryan Hall
- 9:30 New Officer Class—Room 204
- 9:45 Adult Sunday School—Ryan Hall (Friendship Class)
Adult Sunday School—Room 208 ("Mind the Gap")
- 9:45 Children's Sunday School—Room 210
- 9:45 Youth Sunday School—Room 206
- 11:00 Worship—Sanctuary and Live Streamed
- 12:00 Visitors Luncheon "First Steps"—Ryan Hall
- 5:00 Youth Group Gathering—FLC Youth Room

Monday, October 21

- 4:00 Budget and Finance Committee—Room 204

Tuesday, October 22

- 7:00 Men's Bible Study—Room 207
- 10:00 CCP Chapel—Schreiner Chapel

Wednesday, October 23

- 9:00 Prayer Group—Zoom
- 11:00 Staff Meeting—Congregational Care Office
- 5:30 Mid-Week Manna—Ryan Hall
- 7:00 Choir Rehearsal—Choir Room

Thursday, October 24

- 2:00 Stephen Ministry Meeting—Ryan Hall
- 5:00 Music For All—Schreiner Choir Room
- 6:00 Pickleball—FLC Gym

Friday, October 25

Saturday, October 26

- 12:00 HOPE's Kitchen—FLC

Sunday, October 27

- 8:30 Worship—Sanctuary
- 9:30 New Officer Class—Room 204
- 9:30 Fellowship Coffeetime—Ryan Hall
- 9:45 Adult Sunday School—Ryan Hall (Friendship Class)
Adult Sunday School—Room 208 ("Mind the Gap")
- 9:45 Children's Sunday School—Room 210
- 9:45 Youth Sunday School—Room 206
- 11:00 Worship—Sanctuary and Live Streamed
- 5:00 Youth Group Gathering—FLC Youth Room

Building a Community of Disciples Growing Towards
God-centered Worship
Christ-centered Service
Spirit-led Lives



Bulletin Notes

Large print bulletins are available from an usher.

† Please rise as able in body and spirit.

Bold type indicates unison response.

Please take time to silence your cell phones so we may all be fully present in this time and space.

To view past worship services please visit



Let Us Pray

...for those who are sick, hospitalized or in care facilities,

for those who are grieving,

for those who are suffering from memory loss and their caregivers,

for those undergoing significant life transitions,

for our troops, especially those in war-torn areas,

for refugees all over the world and for those living in



Worship Notes

Liturgy from the *Presbyterian Outlook Weekly* Liturgy and the *Call to Worship*.

The cover artwork is entitled, "Psalm 104:4" by Dinah Rau (<https://shop.dinahrau.com>).



Welcome, Visitors!

For more information about our church and its missions, visit our website at www.fpckerrville.org. If you would like to be contacted by phone or email, please submit a contact request form on our website, or call the church office. You may also fill out the Connect Card located in the sanctuary pew pocket, or the Friendship Pad (located at the end of each pew). Please place the Connect Card in the offering tray or give it to an usher.

Prayer or Praise Request? Prayer request cards can be found in the pews, or you may complete your request on our website at www.fpckerrville.org, and it will go to our prayer team which meets on Wednesdays at 9 a.m.

To join the membership of FPC: Contact the church office or email an inquiry online. Wherever you are on your journey of faith, you are welcome to be part of this church family!

Announcements

Sunday, October 20

- **Midweek Manna Series, 5:30pm, Ryan Hall:** Our Wednesday night series this Fall dives deeper into the different stages of faith following the book of Job. Various speakers share their testimonies while guiding these conversations at our tables. We also have music, prayers, and moments of meditation. Children are welcome to stay using crafts/activities at our tables, or we will have childcare available.

Wednesday, Oct. 23-How can we have an honest faith?

Susan Shaw-Meadow

Wednesday, Oct. 30-How can I express and use my faith today?

Rev. Dr. Dongwoo Lee

- **Friday, November 1, 4:00pm-All Saints Organ Concert, Sanctuary:** Join us for a pipe organ concert given in honor of all saints, past and present. The concert will contain uplifting music by Leo Sowerby, George Shearing, JS Bach and Maurice Durufle. It will be played on the 3,439 pipes of the Jehmlich pipe organ by Dr. Sabrina Adrian. All are invited!
- **Sunday, November 3, Schreiner Diner Sunday, 12:30:** Come enjoy fellowship and food after church at the Schreiner Diner, Schreiner University campus, the first Sunday of each month, cost is \$15 per person, credit or debit card only.

- **Thursday, November 7, 5:00pm, Sacred Sips Social Hour, Tailchasers Dog Park and Pub:** Join us for a time of fellowship at Tailchasers Dog Park and Pub, 1834 Junction Highway, Suite B. Come and go as you are able, beginning at 5pm. Feel free to bring any family members and friends (including your four legged ones!) Can't wait to see you there!
- **Saturday, November 9, 9:00am-4:00pm, All Church Retreat-Mo-Ranch:** Come and celebrate the life of the church with fellowship, bible study, worship and games. Breakfast and lunch will be provided. Please sign up on the sheet in the Narthex or call the church office. Transportation is provided, if needed, just let the office know.
- **Supplies for Hope's Kitchen:** As the winter months approach, our Hopes Kitchen ministry needs supplies to pass on to those who walk through our doors Saturday mornings. If you can help, please contribute any:
 - Men's socks and underwear (new, in packages)
 - Women's socks and underwear (new, in packages)
 - New toiletry items
 - Individually, commercially packaged snacks for backpacks
 - Refillable water bottles (new please)
 - Gently used or new coats, sweaters, hats, gloves, scarfs, and small blankets.

Items should be brought to the church office; and monetary donations earmarked for the Hopes Kitchen fund may be made by check, cash or via the church website. If you would like to volunteer to serve, please contact Cheryl Smith, cheryllajunta@icloud.com or (830) 739-6971. Thank you for your support of this important ministry to our community!